



WARNING:

CHOKING HAZARD-Small parts.
Not for children under 4 years.



32709/32708 Asst.

AGES
4+

Lite-Brite®

Sun 'n Nite Brite™

INCLUDES: Includes SUN 'N BRITE™ stand and design template,
suction cup, 47 standard pegs, and 3 large pegs.



x3

1.5VAAA
LR03 size

**ALKALINE
BATTERIES
REQUIRED**

NOT INCLUDED

Phillips/cross head
screwdriver
(not included)
needed to insert
batteries.

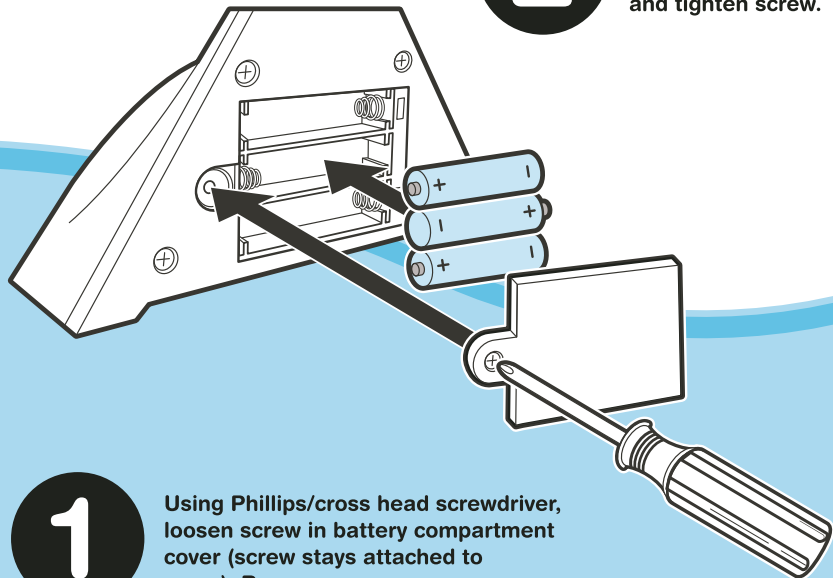




TO INSTALL BATTERIES:

2

Insert 3 x 1.5V “AAA” or LR03 size alkaline batteries. Replace cover and tighten screw.



1

Using Phillips/cross head screwdriver, loosen screw in battery compartment cover (screw stays attached to cover). Remove cover.



IMPORTANT: BATTERY INFORMATION



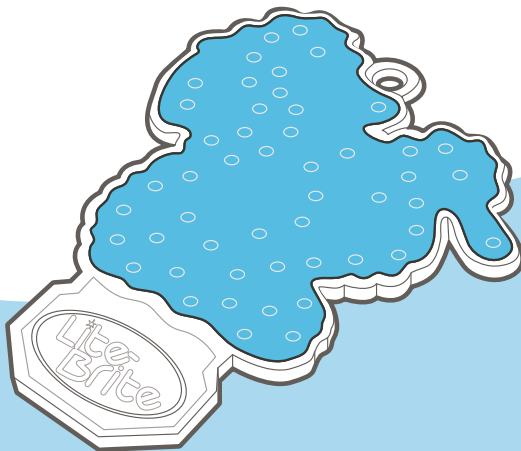
CAUTION:

1. As with all small batteries, the batteries used with this product should be kept away from small children who still put things in their mouths. If they are swallowed, promptly see a doctor and have the doctor phone (202) 625-3333 collect. If you reside outside the United States, have the doctor call your local poison control center.
2. Always follow the instructions carefully. Use only batteries specified and be sure to insert them correctly by matching the + and – polarity markings.
3. Do not mix old batteries and new batteries or standard (carbon-zinc) with alkaline batteries.
4. Remove exhausted or dead batteries from the product.
5. Remove batteries if product is not to be played with for a long time.
6. Do not short-circuit the supply terminals.
7. Should this product cause, or be affected by, local electrical interference, move it away from other electrical equipment. Reset (switching off and back on again or removing and re-inserting batteries) if necessary.
8. RECHARGEABLE BATTERIES: Do not mix these with any other types of batteries. Always remove from the product before recharging. Recharge batteries under adult supervision. **DO NOT RECHARGE OTHER TYPES OF BATTERIES.**

TO CREATE A SUNHORSE DESIGN:

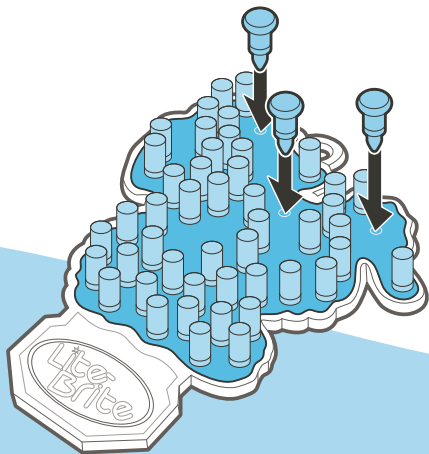
1

Lay design template out on a flat surface.

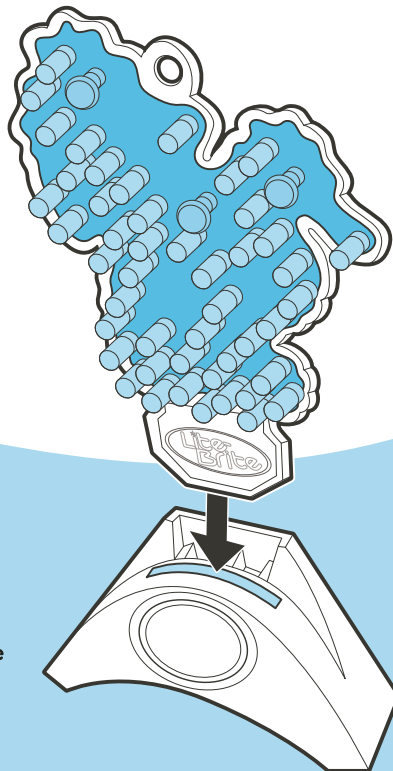


2 Insert colored pegs as far as they will go.

3 Use larger pegs to represent the seahorse's eyes.

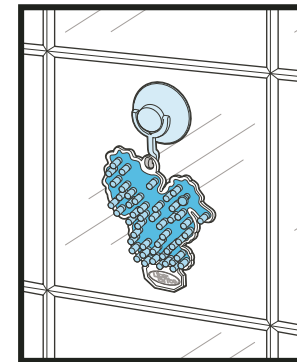
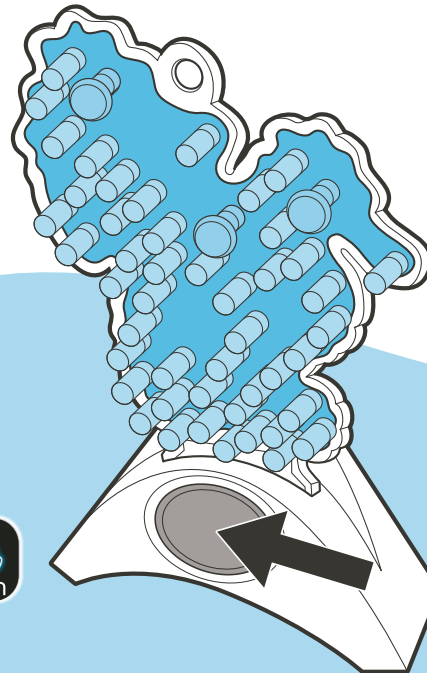


4 When finished pegging, lift template up and slide into base.



5 Press button to illuminate your creation!

6 Press button again to turn off or it will automatically turn off after 10 minutes.



TIP: Use the suction cup hook to display your creation in the window or on a mirror!

Visit
Lite-Brite.com



PN 7163770000

LITEBRITE.COM Questions? Call: 1-800-327-8264. Product and colors may vary.
© 2011 Hasbro. All Rights Reserved. TM and ® denote U.S. Trademarks.

Available on the
App Store

Parents download the Lite-Brite®
App from the App Store.

